

# GLT Products Fabric Options for Removable Blankets

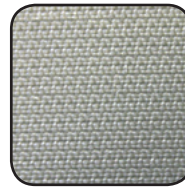
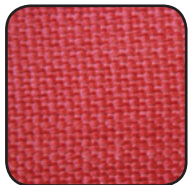
[www.gltproducts.com](http://www.gltproducts.com)

High-temperature fabrics reduce the risk of fire and heat, protect personnel and equipment, lower energy consumption and save money. These specialty fabrics provide temperature protection from 300°F up to 2,300°F. GLT Products' line of Heat-shield fabrics are manufactured with temperature resistant yarns and can be subjected to various treatments and coatings. They are light, flexible, and versatile, making them suitable for an assortment of extreme heat applications. Applications include pipe lagging, expansion joints, heat shields, machinery protection, and removable insulation pads or blankets.



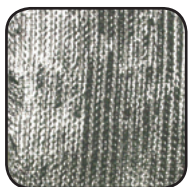
#### **Fiberglass Lagging Cloth**

These fabrics can be dyed a red color to indicate the insulation contains no asbestos. Used as a hot-side insulation fabric, on flange and valve covers, for weld curtains and for stress relief blankets.



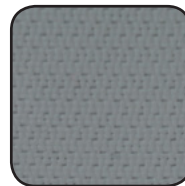
#### **Silicone Fiberglass Cloth**

Provides excellent heat resistance allowing the fabric to remain flexible and durable during prolonged use at high-temperatures. It also has outstanding UV durability and is resistant to water, oil, grease, fuel, and many other chemicals.



#### **Aluminized Fiberglass Cloth**

Suited for applications requiring insulation and superior radiant barrier. Aluminum fiberglass cloth is lightweight and flexible. The heat reflecting fabric is commonly used as the outer shell in a multi-layer removable insulation pad or insulation blanket.



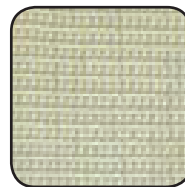
#### **Teflon Coated Fiberglass Cloth**

Recommended for use in removable blankets for corrosive environments. The fabric contains a non-reactive polymer coating. Often used as weather or chemical resistant barrier.



#### **Vermiculite Fiberglass Cloth**

This high-temperature resistant fabric offers excellent temperature and abrasion resistance. Under direct flame, the fabric is odorless and virtually smokeless.



#### **Refractory Silica Fabric**

Remains flexible after high-temperature exposure and provides excellent protection from a molten metal splash. It is often used in welding and metal cutting applications.

# High-Temperature Fabrics

	Fiberglass Lagging Cloths	Aluminized Fiberglass Cloth	Vermiculite Fiberglass Cloths	Refractory Silica Cloths	Silicone Fiberglass Cloths	Teflon Cloth
<b>Peak Temperature</b>	1,000°F	300°F	1,500°F	1,800°F	480°F	500°F
<b>Primary Applications</b>	Insulation pads, disposable welding cloth	Insulation pads, gaskets, custom seals	Insulation pads, gaskets, disposable welding cloth	Industrial furnace curtains, welding curtains, welding blankets	Removable insulation cover, fire blankets, welding blanket and curtains	Splash shields, expansion joints and valve covers, safety clothing
<b>Available Styles</b>	Style 2025/9383 Style 84215/9383	2025/9480	Vermiculite 18 oz. Vermiculite 24 oz.	Style 84 Style 188	Style 725,750, 774 and 775	Style 650

	Weight oz/sq yd	Thickness	Color	Width	
				36"	60"
<b>Fiberglass Lagging Cloth Style 2025/ 9383</b>	18.5	.030"	Tan		<input checked="" type="checkbox"/>
<b>Fiberglass Lagging Cloth Style 84215/9383</b>	8.5	.018"	Tan		<input checked="" type="checkbox"/>
<b>Aluminized Fiberglass Cloth Style 2025/9480</b>	19.6	.032"	Silver		<input checked="" type="checkbox"/>
<b>Vermiculite 18 oz.</b>	18	.031"	Gold		<input checked="" type="checkbox"/>
<b>Vermiculite 24 oz.</b>	24	.039"	Gold		<input checked="" type="checkbox"/>
<b>Silica Style 84</b>	18	.030"	Natural	<input checked="" type="checkbox"/>	<input checked="" type="checkbox"/>
<b>Silica Style 188</b>	36	.054"	Natural	<input checked="" type="checkbox"/>	<input checked="" type="checkbox"/>
<b>Silicone Style 725</b>	17	.015"	Gray		<input checked="" type="checkbox"/>
<b>Silicone Style 750</b>	17	.018"	Silver		<input checked="" type="checkbox"/>
<b>Silicone Style 774</b>	17	.016	Silver		<input checked="" type="checkbox"/>
<b>Silicone Style 775</b>	34	.037"	Silver		<input checked="" type="checkbox"/>
<b>Teflon Fiberglass Style 650</b>	17	.016"	Gray		<input checked="" type="checkbox"/>